

## Parts\_Group #24

**Product - SKU** KD-150GKA-2    **Group** Engine

**Exploded View** EngineParts.jpg

### Parts in Vehicle

Add Parts in Vehicle

| Ref No. | Part No.      | Description                        | Related Part  | Part - Retail Price |  |  |
|---------|---------------|------------------------------------|---------------|---------------------|--|--|
|         | 150GKA2-001   | CVT clutch assembly                | 150GKA2-001   | \$100.00            |  |  |
|         | 150GKA2-22002 | carburetor intake manifold         | 150GKH2-008   | \$20.00             |  |  |
|         | 150GKA-2      | Cylinder head                      |               |                     |  |  |
|         | 150GKA2       | Cylinder block                     |               |                     |  |  |
|         | 150GKA-2      | Piston w/ ring                     |               |                     |  |  |
|         | 150GKA-2      | EXHAUST PIPE GASKET                |               |                     |  |  |
|         | 150GKA2-20002 | gear sensor                        | 150GKA2-20002 | \$6.00              |  |  |
|         | 150GKA22201a  | muffler assembly - Old style       | 150GKA22201a  |                     |  |  |
| 1       | 150GKA21003   | air filter                         | 150GKA21003   | \$45.00             |  |  |
| 2       | 150GKA21004   | air filter thimble                 | 150GKA21004   | \$1.50              |  |  |
| 3       | 150GKA21005   | air filter rear panel              | 150GKA21005   | \$3.00              |  |  |
| 4       | 150GKA21006   | air filter rubber block            | 150GKA21006   | \$1.50              |  |  |
| 5       | 150GKA21007   | crankcase bleed pipe joint         | 150GKA21007   | \$7.00              |  |  |
| 6       | 150GKA21008   | crankcase bleed pipe joint thimble | 150GKA21008   | \$1.50              |  |  |
| 7       | 150GKA22203   | auxiliary air filter               | 150GKA22203   | \$5.00              |  |  |
| 8       | 150GKA22204   | auxiliary air filter one-way valve | 150GKA22204   | \$15.00             |  |  |
| 9       | 150GKA22205   | auxiliary air filter rubber hose   | 150GKA22205   | \$1.50              |  |  |
| 10      | 150GKA22206   | auxiliary air filter rubber hose   | 150GKA22206   | \$1.50              |  |  |
| 11      | 150GKA22208   | thimble $\Phi$ 17                  | 150GKA22208   | \$1.00              |  |  |
| 12      | 150GKA22207   | thimble $\Phi$ 15                  | 150GKA22207   | \$1.00              |  |  |
| 13      | 150GKA22202   | exhaust pipe gasket                | 150GKA22202   | \$1.50              |  |  |
| 14      | 150GKA22201   | muffler assembly                   | 150GKA22201   | \$80.00             |  |  |
| 15      | 150GKA21002   | carburetor                         | 150GKA21002   | \$70.00             |  |  |
| 16      | 150GKA21001   | engine assembly                    | 150GKA21001   | \$500.00            |  |  |
| 17      | 150GKA21017   | engine strengthen board sheath     | 150GKA21017   | \$1.50              |  |  |

| <b>Ref No.</b> | <b>Part No.</b> | <b>Description</b>                   | <b>Related Part</b> | <b>Part - Retail Price</b> |  |  |
|----------------|-----------------|--------------------------------------|---------------------|----------------------------|--|--|
| 18             | 150GKA21016     | engine strengthen board              | 150GKA21016         | \$3.00                     |  |  |
| 19             | 150GKA21010     | engine front bracket sheath          | 150GKA21010         | \$4.00                     |  |  |
| 20             | 150GKA23905     | reverse gear box support board 1     | 150GKA23905         | \$7.00                     |  |  |
| 21             | 150GKA23906     | reverse gear box support board 2     | 150GKA23906         | \$3.00                     |  |  |
| 22             | 150GKA23702     | reverse gear box sheath 1            | 150GKA23702         | \$1.50                     |  |  |
| 23             | 150GKA23703     | reverse gear box sheath 2            | 150GKA23703         | \$1.50                     |  |  |
| 24             | 150GKA23701     | reverse gear box assembly            | 150GKA23701         | \$120.00                   |  |  |
| 25             | 150GKA23907     | reverse gear box support board bolt  | 150GKA23907         | \$1.50                     |  |  |
| 26             | 150GKA21018     | engine rubber shock absorber         | 150GKA21018         | \$5.00                     |  |  |
| 28             | 150GKA21019     | rubber buffer block                  | 150GKA21019         | \$2.00                     |  |  |
| 29             | 150GKA21011     | engine cushion block                 | 150GKA21011         | \$1.50                     |  |  |
| 30             | 150GKA21012     | engine shock attenuation             | 150GKA21012         | \$1.50                     |  |  |
| 31             | 150GKA21013     | engine shock attenuation spacer ring | 150GKA21013         | \$1.50                     |  |  |
| 32             | 150GKA21014     | engine fixing tile                   | 150GKA21014         | \$1.50                     |  |  |
| 33             | 150GKA21015     | engine hang U-piece                  | 150GKA21015         | \$5.00                     |  |  |
|                |                 |                                      |                     |                            |  |  |

**# of Parts in Vehicle**

40



## Parts\_Group #23

**Product - SKU** KD-150GKA-2    **Group** Chassis

**Exploded View** FrameAndEquipmentParts.jpg

### Parts in Vehicle

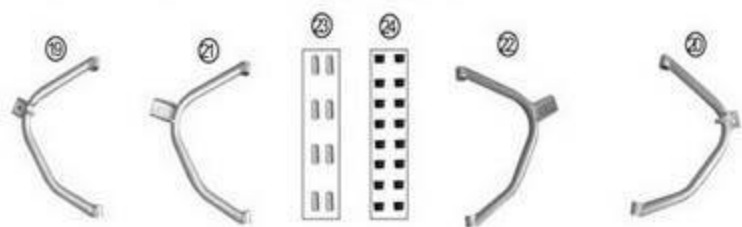
Add Parts in Vehicle

| Ref No. | Part No.     | Description                          | Related Part | Part - Retail Price |  |  |
|---------|--------------|--------------------------------------|--------------|---------------------|--|--|
|         | 150GKA-2     | ROLLBAR WASHER                       |              |                     |  |  |
|         | 150GKA-2     | ROLLBAR BLACK PLASTIC WASHER         |              |                     |  |  |
|         | 150GKA-2     | TOP RUBBER MOTOR MOUNT               |              |                     |  |  |
|         | 150GKA-00016 | Old engine                           | 150GKA-00016 |                     |  |  |
| 1       | 150GKA24401  | driver seat                          | 150GKA24401  | \$120.00            |  |  |
| 2       | 150GKA24402  | passenger seat                       | 150GKA24402  | \$120.00            |  |  |
| 3       | 150GKA24403  | seat rail 1                          | 150GKA24403  | \$20.00             |  |  |
| 4       | 150GKA24404  | seat rail 2                          | 150GKA24404  | \$20.00             |  |  |
| 5       | 150GKA27601  | seat belt assembly                   | 150GKA27601  | \$30.00             |  |  |
| 6       | 150GKA25001  | gas tank (fuel tank)                 | 150GKA25001  | \$40.00             |  |  |
| 7       | 150GKA25002  | gas tank (fuel tank) cap             | 49FM55002    | \$7.00              |  |  |
| 8       | 150GKA25003  | fuel (gas) petcock valve             | 150GKA25003  | \$9.00              |  |  |
| 9       | 150GKA25004  | fuel filter                          | 150GKA25004  | \$5.00              |  |  |
| 10      | 150GKA25009  | fuel tank bracket                    | 150GKA25009  | \$2.00              |  |  |
| 11      | 150GKA25006  | gas (fuel) intake tube (short)       | 150GKA25006  | \$3.00              |  |  |
| 12      | 150GKA25005  | gas (fuel) intake tube (long)        | 150GKA25005  | \$7.00              |  |  |
| 13      | 150GKA25007  | vacuum pipe                          | 150GKA25007  | \$1.50              |  |  |
| 14      | 150GKA25008  | thimble Ø7                           | 150GKA25008  | \$1.00              |  |  |
| 15      | 150GKA23001  | frame                                | 150GKA23001  | \$200.00            |  |  |
| 16      | 150GKA27608  | foam pipe 1                          | 150GKA27608  | \$3.00              |  |  |
| 17      | 150GKA27611  | protecting pole cloth 1              | 150GKA27611  | \$2.00              |  |  |
| 18      | 150GKA27605  | big plastic cover of protecting pole | 150GKA27605  | \$1.00              |  |  |
| 19      | 150GKA27606  | bolt block                           | 150GKA27606  | \$1.00              |  |  |
| 20      | 150GKA23002  | front bumper                         | 150GKA23002  | \$20.00             |  |  |
| 21      | 150GKA27612  | protecting pole cloth 2              | 150GKA27612  | \$3.00              |  |  |
| 22      | 150GKA27609  | foam pipe 2                          | 150GKA27609  | \$3.00              |  |  |

| <b>Ref No.</b> | <b>Part No.</b> | <b>Description</b>       | <b>Related Part</b> | <b>Part - Retail Price</b> |  |  |
|----------------|-----------------|--------------------------|---------------------|----------------------------|--|--|
| 23             | 150GKA23004     | rear protection pole     | 150GKA23004         | \$30.00                    |  |  |
| 24             | 150GKA27613     | protecting pole cloth 3  | 150GKA27613         | \$5.00                     |  |  |
| 25             | 150GKA27610     | foam pipe 3              | 150GKA27610         | \$5.00                     |  |  |
| 26             | 150GKA23003     | middle protection pole   | 150GKA23003         | \$40.00                    |  |  |
| 27             | 150GKA27401     | front bumper             | 150GKA27401         | \$20.00                    |  |  |
| 28             | 150GKA27607     | foot pedal cushion       | 150GKA27607         | \$3.00                     |  |  |
| 29             | 150GKA27602     | rear-view mirror (left)  | 150GKA27602         | \$10.00                    |  |  |
| 30             | 150GKA27603     | rear-view mirror (right) | 150GKA27603         | \$10.00                    |  |  |
| 31             | 150GKA27604     | tool box                 | 150GKA27604         | \$7.00                     |  |  |
|                |                 |                          |                     |                            |  |  |

**# of Parts in Vehicle**

35



## Parts\_Group #25

**Product - SKU** KD-150GKA-2    **Group** Front Suspension

**Exploded View** FrontSuspensionParts.jpg

### Parts in Vehicle

Add Parts in Vehicle

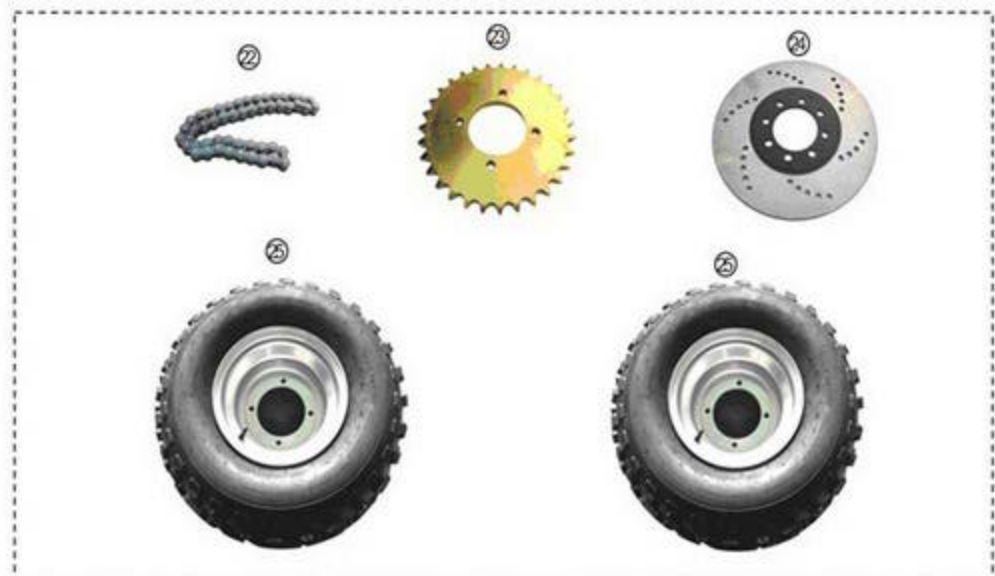
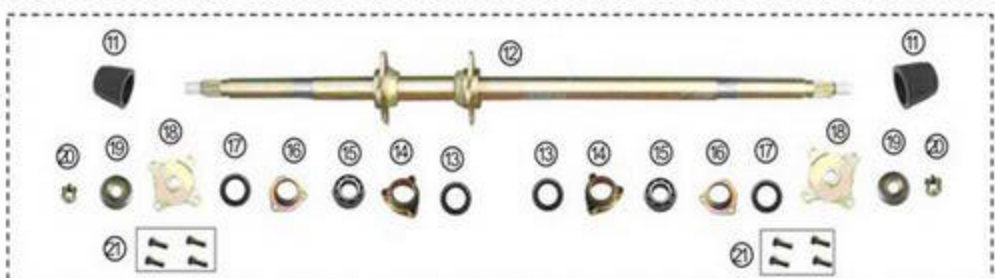
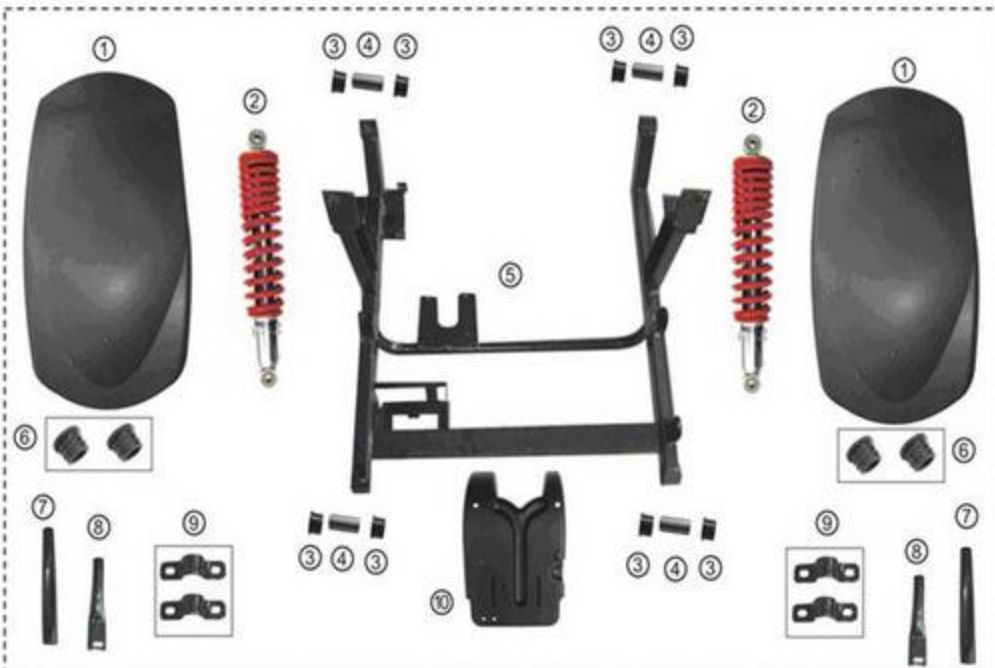
| Ref No. | Part No.      | Description                   | Related Part  | Part - Retail Price |  |  |
|---------|---------------|-------------------------------|---------------|---------------------|--|--|
|         | 150GKA23201-1 | special front wheel           |               |                     |  |  |
|         | 150GKA2-30001 | front tire 21X7-10            | 150GKA2-30001 |                     |  |  |
|         | 150GKA2-30002 | front rim                     | 150GKA2-30002 |                     |  |  |
| 1       | 150GKA24701   | front mudguard                | 150GKA24701   | \$10.00             |  |  |
| 2       | 150GKA24702   | front left mudguard bracket   | 150GKA24702   | \$10.00             |  |  |
| 3       | 150GKA24703   | front right mudguard bracket  | 150GKA24703   | \$10.00             |  |  |
| 4       | 150GKA23303   | axle spindle dustproof cover  | 150GKA23303   | \$1.50              |  |  |
| 5       | 150GKA23304   | axle spindle dustproof washer | 150GKA23304   | \$1.50              |  |  |
| 6       | 150GKA23301   | front axle spindle (left)     | 150GKA23301   | \$40.00             |  |  |
| 7       | 150GKA23302   | front axle spindle (right)    | 150GKA23302   | \$40.00             |  |  |
| 8       | 150GKA23101   | front shock absorber          | 150GKA23101   | \$50.00             |  |  |
| 9       | 150GKA23207   | oil seal 25×47×7              | 150GKA23207   | \$1.50              |  |  |
| 10      | 150GKA23206   | bearing 6204                  | 150GKA23206   | \$5.00              |  |  |
| 11      | 150GKA23202   | front hub flange              | 150GKA23202   | \$30.00             |  |  |
| 12      | 150GKA24304   | front brake disk              | 150GKA24304   | \$15.00             |  |  |
| 13      | 150GKA23205   | bearing 6203                  | 150GKA23205   | \$5.00              |  |  |
| 14      | 150GKA23208   | oil seal 27×42×7              | 150GKA23208   | \$1.50              |  |  |
| 15      | 150GKA23203   | front wheel bearing sheath    | 150GKA23203   | \$1.50              |  |  |
| 16      | 150GKA23305   | nut M14×1.5                   | 150GKA23305   | \$1.50              |  |  |
| 17      | 150GKA23209   | axle rubber dust shroud       | 150GKA23209   | \$4.00              |  |  |
| 19      | 150GKA23102   | front upper swing arm (left)  | 150GKA23102   | \$20.00             |  |  |
| 20      | 150GKA23103   | front upper swing arm (right) | 150GKA23103   | \$20.00             |  |  |
| 21      | 150GKA23104   | front lower swing arm (left)  | 150GKA23104   | \$20.00             |  |  |



| <b>Ref No.</b> | <b>Part No.</b> | <b>Description</b>               | <b>Related Part</b> | <b>Part - Retail Price</b> |  |  |
|----------------|-----------------|----------------------------------|---------------------|----------------------------|--|--|
| 22             | 150GKA23105     | front lower swing arm (right)    | 150GKA23105         | \$20.00                    |  |  |
| 23             | 150GKA23106     | front suspension axis pin        | 150GKA23106         | \$1.50                     |  |  |
| 24             | 150GKA23107     | front swing arm nylon cover      | 150GKA23107         | \$1.50                     |  |  |
| 25             | 150GKA23201     | front tire and steel rim 21x7-10 | 150GKA23201         | \$70.00                    |  |  |
|                |                 |                                  |                     |                            |  |  |

**# of Parts in Vehicle**

27



## Parts\_Group #26

**Product - SKU** KD-150GKA-2    **Group** Rear Suspension

**Exploded View** RearSuspensionParts.jpg

### Parts in Vehicle

Add Parts in Vehicle

| Ref No. | Part No.      | Description                             | Related Part  | Part - Retail Price |  |  |
|---------|---------------|---|---------------|---------------------|--|--|
|         | 150GKA2-40001 | rear tire                               | 150GKA2-40001 |                     |  |  |
|         | 150GKA2-40002 | rear rim                                | 150GKA2-40002 |                     |  |  |
| 1       | 150GKA24704   | rear mudguard                           | 150GKA24704   | \$10.00             |  |  |
| 2       | 150GKA23401   | rear shock absorber                     | 150GKA23401   | \$50.00             |  |  |
| 3       | 150GKA23403   | rear suspension lining                  | 150GKA23403   | \$1.50              |  |  |
| 4       | 150GKA23404   | rear suspension axis pin                | 150GKA23404   | \$2.00              |  |  |
| 5       | 150GKA23402   | rear suspension assembly                | 150GKA23402   | \$90.00             |  |  |
| 6       | 150GKA24708   | stoppie rubber 21                       | 150GKA24708   | \$1.50              |  |  |
| 7       | 150GKA24706   | rear mudguard installation pipe (rear)  | 150GKA24706   | \$7.00              |  |  |
| 8       | 150GKA24705   | rear mudguard installation pipe (front) | 150GKA24705   | \$3.00              |  |  |
| 9       | 150GKA24707   | rear mudguard thimble                   | 150GKA24707   | \$1.50              |  |  |
| 10      | 150GKA23410   | chain cover                             | 150GKA23410   | \$10.00             |  |  |
| 12      | 150GKA23601   | rear axle                               | 150GKA23601   | \$90.00             |  |  |
| 13      | 150GKA23409   | oil seal 34?0?                          | 150GKA23409   | \$1.50              |  |  |
| 14      | 150GKA23405   | rear bearing block                      | 150GKA23405   | \$10.00             |  |  |
| 15      | 150GKA23407   | bearing 6206                            | 150GKA23407   | \$5.00              |  |  |
| 16      | 150GKA23406   | rear bearing cover                      | 150GKA23406   | \$4.00              |  |  |
| 17      | 150GKA23408   | oil seal 30?2?                          | 150GKA23408   | \$1.50              |  |  |
| 18      | 150GKA23502   | rear hub flange                         | 150GKA23502   | \$30.00             |  |  |
| 19      | 150GKA23504   | rear axle washer                        | 150GKA23504   | \$2.00              |  |  |
| 20      | 150GKA23604   | nut M16x.5                              | 150GKA23604   | \$1.50              |  |  |
| 21      | 150GKA23503   | hub flange bolt                         | 150GKA23503   | \$3.00              |  |  |
| 22      | 150GKA23603   | chain 530                               | 150GKA23603   | \$15.00             |  |  |
| 23      | 150GKA23602   | rear axle sprocket wheel                | 150GKA23602   | \$20.00             |  |  |
| 24      | 150GKA24305   | rear brake disk                         | 150GKA24305   | \$20.00             |  |  |
| 25      | 150GKA23501   | rear tire and steel rim                 | 150GKA23501   | \$100.00            |  |  |

**# of Parts in Vehicle**

26



## Parts\_Group #27

**Product - SKU** KD-150GKA-2    **Group** Electric

**Exploded View** ElectricalParts.jpg

### Parts in Vehicle

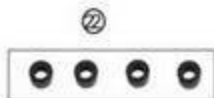
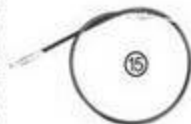
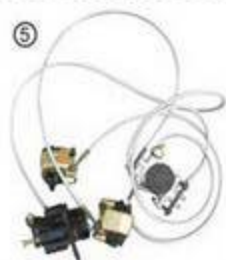
Add Parts in Vehicle

| Ref No. | Part No.      | Description                     | Related Part    | Part - Retail Price |  |  |
|---------|---------------|---------------------------------|-----------------|---------------------|--|--|
|         | 150GKA24807a  | fog light with grill            | 150GKA24807a    | \$35.00             |  |  |
|         | 150GKA2-50006 | hazard warning signal switch    | 150GKD2-50006   | \$10.00             |  |  |
|         | 150GKA2-50014 | headlight dimmer switch         | 250FW4815       | \$7.00              |  |  |
|         | 150GKA2-51003 | reflector                       | 90GKG2-51003    | \$7.00              |  |  |
| 1       | 150GKA24811   | horn                            | 150GKA24811     | \$10.00             |  |  |
| 2       | 150GKA24808   | front turning signal light      | 1000GKA2-112    | \$10.00             |  |  |
| 3       | 150GKA24807   | headlight                       | 150GKA24807     | \$30.00             |  |  |
| 4       | 150GKA24809   | rear turning signal light       | 1000GKA2-112    | \$10.00             |  |  |
| 5       | 150GKA24810   | brake light                     | 150GKA24810     | \$15.00             |  |  |
| 6       | 150GKA24813   | ignition switch                 | 150GKA24813     | \$20.00             |  |  |
| 7       | 150GKA24814   | kill switch                     | 150GKA24814     | \$7.00              |  |  |
| 8       | 150GKA24816   | headlight switch (dip switch)   | 150GKA24816     | \$7.00              |  |  |
| 9       | 150GKA24815   | turning signal switch           | 150GKA24815     | \$5.00              |  |  |
| 10      | 150GKA24817   | horn button                     | 150FS4815       | \$7.00              |  |  |
| 11      | 150GKA24818   | fuse                            | 150GKA24818     | \$1.50              |  |  |
| 12      | 150GKA24819   | starter relay (solenoid)        | 150GKA24819     | \$40.00             |  |  |
| 13      | 150GKA24820   | silicon rectifier               | 150GKA24820     | \$40.00             |  |  |
| 14      | 150GKA24821   | CDI ignition unit               | 150GKA24821     | \$30.00             |  |  |
| 15      | 150GKA24823   | flasher relay unit              | MC-95-250-05-27 | \$15.00             |  |  |
| 16      | 150GKA24822   | ignition coil                   | 150GKA24822     | \$15.00             |  |  |
| 17      | 150GKA24824   | resistor                        | 150GKA24824     | \$2.00              |  |  |
| 18      | 150GKA24831   | stopple rubber 12               | 150GKA24831     | \$1.50              |  |  |
| 19      | 150GKA24830   | electrical component box washer | 150GKA24830     | \$2.00              |  |  |
| 20      | 150GKA24829   | electrical component box cover  | 150GKA24829     | \$10.00             |  |  |
| 21      | 150GKA24828   | electrical component box panel  | 150GKA24828     | \$7.00              |  |  |

| <b>Ref No.</b> | <b>Part No.</b> | <b>Description</b>     | <b>Related Part</b> | <b>Part - Retail Price</b> |  |  |
|----------------|-----------------|------------------------|---------------------|----------------------------|--|--|
| 22             | 150GKA24825     | charger                | 150GKA24825         | \$15.00                    |  |  |
| 23             | 150GKA24827     | charger plug cover     | 150GKA24827         | \$1.00                     |  |  |
| 24             | 150GKA24826     | charger plug           | 150GKA24826         | \$5.00                     |  |  |
| 25             | 150GKA24834     | dashboard panel        | 150GKA24834         | \$25.00                    |  |  |
| 26             | 150GKA24801     | battery 12V/9Ah        | 150GKA24801         | \$50.00                    |  |  |
| 27             | 150GKA24802     | battery cap            | 150GKA24802         | \$4.00                     |  |  |
| 28             | 150GKA24803     | battery rubber block   | 150GKA24803         | \$1.50                     |  |  |
| 29             | 150GKA24805     | electrolyte            | 150GKA24805         | \$5.00                     |  |  |
| 30             | 150GKA24804     | battery belt           | 150GKA24804         | \$1.50                     |  |  |
| 31             | 150GKA24812     | decorate horn          | 150GKA24812         | \$10.00                    |  |  |
| 32             | 150GKA24806     | harness assembly       | 150GKA24806         | \$50.00                    |  |  |
| 33             | 150GKA24833     | starter positive cable | 150GKA24833         | \$3.00                     |  |  |
| 34             | 150GKA24832     | starter negative cable | 150GKA24832         | \$3.00                     |  |  |
|                |                 |                        |                     |                            |  |  |

**# of Parts in Vehicle**

38





## Parts\_Group #28

**Product - SKU** KD-150GKA-2    **Group** Steering and Brake

**Exploded View** SteeringAndBrakeParts.jpg

### Parts in Vehicle

Add Parts in Vehicle

| Ref No. | Part No.      | Description                       | Related Part  | Part - Retail Price |  |  |
|---------|---------------|-----------------------------------|---------------|---------------------|--|--|
|         | 150GKA-60001  | Brake pads                        | 150GKA-60001  | \$10.00             |  |  |
|         | 150GKA2-60001 | tie rod end                       | 150GKA2-60001 | \$15.00             |  |  |
| 1       | 150GKA24001   | steering wheel                    | 150GKA24001   | \$40.00             |  |  |
| 2       | 150GKA24002   | steering shaft                    | 150GKA24002   | \$50.00             |  |  |
| 3       | 150GKA24004   | redirector thimble                | 150GKA24004   | \$2.00              |  |  |
| 4       | 150GKA24003   | steering box                      | 150GKA24003   | \$70.00             |  |  |
| 5       | 150GKA24301   | hydraulic pressure brake assembly | 150GKA24301   | \$150.00            |  |  |
| 6       | 150GKA24302   | brake master cylinder block       | 150GKA24302   | \$5.00              |  |  |
| 7       | 150GKA24303   | brake master cylinder handspike   | 150GKA24303   | \$3.00              |  |  |
| 8       | 150GKA24313   | brake oil pipe thimble            | 150GKA24313   | \$1.50              |  |  |
| 9       | 150GKA23901   | reverse lever assembly            | 150GKA23901   | \$30.00             |  |  |
| 10      | 150GKA23904   | reverse cable U-piece             | 150GKA23904   | \$2.00              |  |  |
| 11      | 150GKA23903   | reverse lever limiting hoop       | 150GKA23903   | \$1.50              |  |  |
| 12      | 150GKA23902   | reverse lever boot                | 150GKA23902   | \$7.00              |  |  |
| 13      | 150GKA24311   | parking brake assembly            | 150GKA24311   | \$20.00             |  |  |
| 14      | 150GKA23908   | reverse lever bracket             | 150GKA23908   | \$7.00              |  |  |
| 15      | 150GKA24312   | parking brake cable               | 150GKA24312   | \$10.00             |  |  |
| 16      | 150GKA22006   | throttle control cable            | 150GKA22006   | \$16.50             |  |  |
| 17      | 150GKA23909   | reverse cable                     | 150GKA23909   | \$20.00             |  |  |
| 18      | 150GKA22001   | accelerator pedal assembly        | 150GKA22001   | \$22.00             |  |  |
| 19      | 150GKA22002   | accelerator pedal rubber cover    | 150GKA22002   | \$3.50              |  |  |
| 20      | 150GKA24307   | brake pedal rubber cover          | 150GKA24307   | \$3.00              |  |  |
| 21      | 150GKA24306   | brake pedal                       | 150GKA24306   | \$20.00             |  |  |
| 22      | 150GKA22005   | pedal lining                      | 150GKA22005   | \$1.50              |  |  |
| 23      | 150GKA22004   | accelerator pedal fixing shaft    | 150GKA22004   | \$5.00              |  |  |

| <b>Ref No.</b> | <b>Part No.</b> | <b>Description</b>       | <b>Related Part</b> | <b>Part - Retail Price</b> |  |  |
|----------------|-----------------|--------------------------|---------------------|----------------------------|--|--|
| 24             | 150GKA22003     | accelerator pedal spring | 150GKA22003         | \$2.00                     |  |  |
| 25             | 150GKA24309     | brake pedal shaft        | 150GKA24309         | \$3.00                     |  |  |
| 26             | 150GKA24308     | brake pedal spring       | 150GKA24308         | \$1.50                     |  |  |
|                |                 |                          |                     |                            |  |  |

**# of Parts in Vehicle**

28